



Dear Designers,

Welcome back to **ART...WORKS**, Art Associates' newsletter for the Interior & Spatial Design Industry. Each month we will keep you up-to-date with new artists, industry-related goings-on and featured projects to show you just how art can work for you.

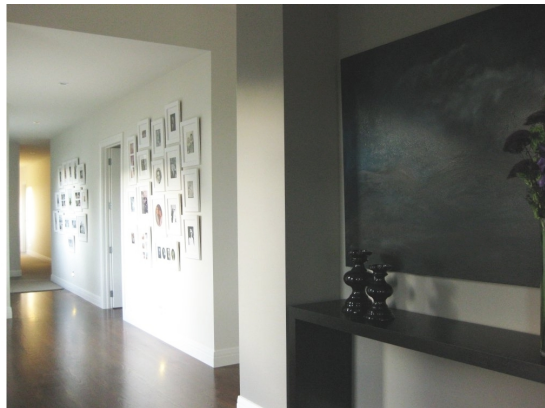
Did you know that alongside leasing and selling original contemporary art from around 400 New Zealand artists, we also curate and install corporate and private collections and can organise framing for you and your clients at significantly better-than-retail prices. Check out some of our installation prowess [here](#). If you're a bit squeamish or not a fan of taxidermy, have a look at the very palatable apartment of one of our clients that was just featured in the latest **Urbis** – we're the curatorial and installation team all rolled into one! To see more images of this apartment, click [here](#).

Don't hesitate to give us a call on **09 376 4308**, email us on [info@artassociates.co.nz](mailto:info@artassociates.co.nz), or check the website at [www.artassociates.co.nz](http://www.artassociates.co.nz) to see just how we can help you with your next project.

All the best

Art Associates Ltd  
Art Leasing :: Art Consultancy :: Art Sales  
Grey Lynn, Auckland, New Zealand

## ART...WORKS



Recently, Art Associates was approached by Trinity Interior Design to complement the design of a client's new home. Trinity's work was meticulous and presented a considered interior that lent itself superbly to the client's desire for dramatic and expressionistic artwork. In response to Trinity's brief, Art Associates was proud to be able to supply works by Neville Smitheram, Douglas Woods,

Kathy Barber, Ralph Hotere and Beverley Rhodes (among others) to add the finishing touches to the client's home. Alongside providing artwork, we worked closely with Trinity's project designer Jane McAulay-Frame, curating, framing and installing a selection of family photos to the client's specifications for a 'growing' wall that documented the many generations of this particular family. See the photos online [here](#), or click on the image above.

For other examples of our work, go [here](#), or get in touch with us to find out how you can use NZ artwork to complement your work.

## ART...NEWS

\*\*\* Usually, the destruction of artwork is a travesty beyond imagination. When Karl Maughan does it, it's for a good cause – the final vintage for Waiheke's Christensen Estate. Check it out on film at [Karl's site](#).

\*\*\* Usually, the Olympics are all about track & field. We have the distinct feeling that the 2012 Olympics in London might be about something else – Anish Kapoor's monumental '[Olympic Tower](#)' sculpture. (Kapoor is a Turner Prize winning artist also responsible for a major work of sculpture resident at Alan Gibbs' Kaukapakapa farm).

\*\*\* To Olympics of another kind... It's the inaugural [Art Handling Olympics](#), a contest of wit, skill and strength created by a group of frustrated art handlers in New York. Our favourite event: The Static Hold, where contestants must hold up an extremely weighty painting made of lead and plywood while a German curator berates them about their incompetence. Our favourite team: Well Hung.

## ART...ISTS

This month we showcase the work of [Beatrice Carlson](#):



To see more of Beatrice's work, click [here](#)

art associates ltd. 37 scanlan street. grey lynn. auckland 1021. new zealand  
phone: 09 376 4308 email. [info@artassociates.co.nz](mailto:info@artassociates.co.nz) [www.artassociates.co.nz](http://www.artassociates.co.nz)

we don't do junk, so if you would like to unsubscribe, please reply to this email with 'unsubscribe' in the subject line.